

> This zine is part of MIT Media Lab's Public Library Innovation Exchange (PLIX)

> By Doyung Lee and Avery Normandin

For other PLIX activities, visit:

plix.media.mit.edu



a
plix
zine

v0.01

Six Ways to Collect

Here are some ways to take inventory of both biotic and abiotic factors around you:

Picking
Pick up fallen leaves, rocks, and other objects.



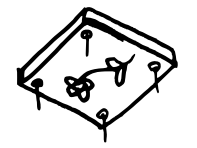
Mapping
Mark interesting locations or where you collected certain items.



Photographing
Take photos of a landscape, and use a viewfinder to frame a scene.



Pressing
Press wildflowers or leaves to preserve them.



Interviewing
Interview people about the area you live in, or collect sounds in the area.



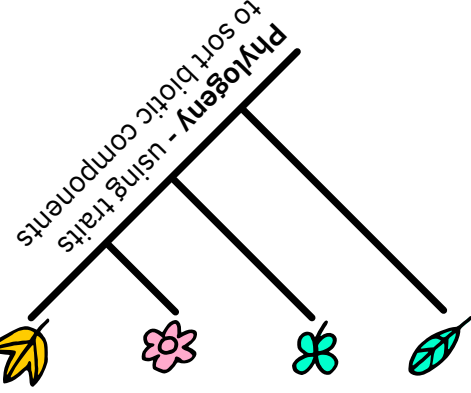
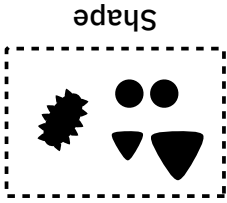
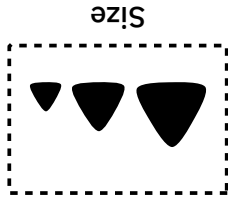
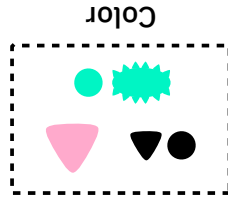
Rubbing
Rub tree bark and other interesting textures with paper and crayons.



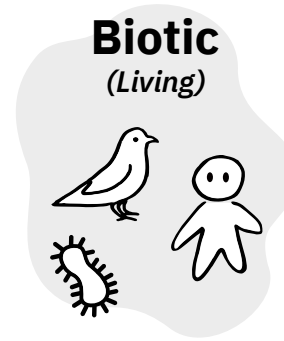
Curating Your Collection

Once you have a collection of things you've found, arrange them to find patterns, and to showcase the biotic and abiotic factors in your neighborhood. Here are two ways you might do this:

Taxonomy - categorizing by broad traits or characteristics like:



We generally categorize parts of the ecosystem into two groups:



Other **biotic** factors in our environment:
> trees
> pets

or



Other **abiotic** factors in our environment:
> trash
> vehicles
> construction

Biotic and **abiotic** parts of an environment may not always be observable or tangible — we can't see bacteria, or touch temperature — but their effects are! *Can you think of some ways that abiotic factors affect living things?*